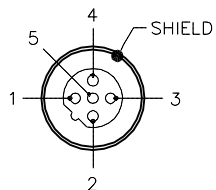
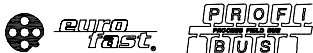


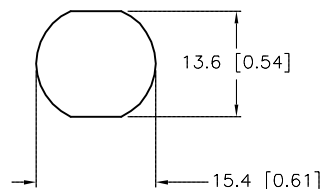
## MALE END VIEW



- 1 = N/C  
2 = GREEN (BUS\_A)  
3 = N/C  
4 = RED (BUS\_B)  
5 = BARE (SHIELD)

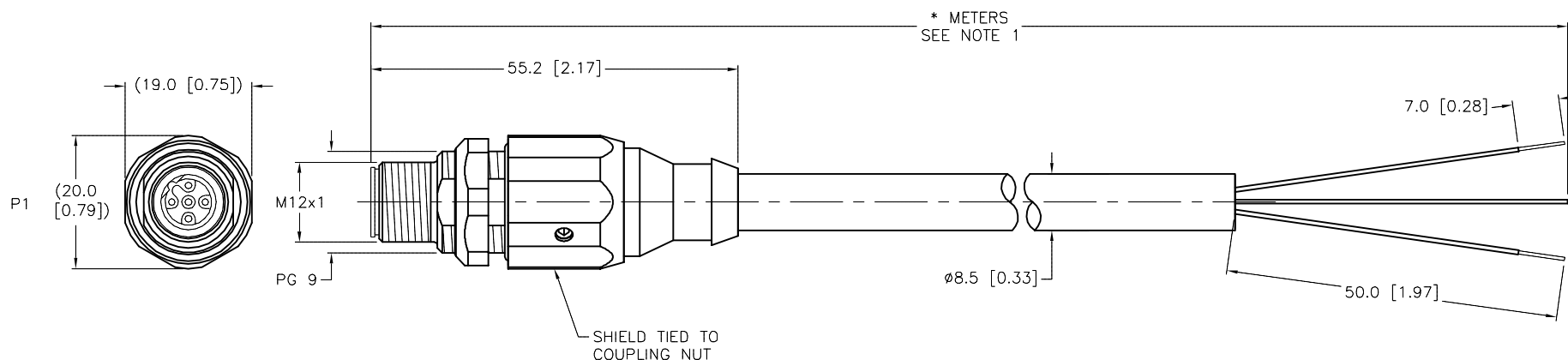


## TYPICAL PANEL CUTOUT



## SPECIFICATIONS

CONTACT CARRIER MATERIAL	NYLON or TPU
MOLDED HEAD MATERIAL/COLOR	TPU/BLACK
CONTACT MATERIAL/PLATING	BRASS/GOLD
COUPLING NUT MATERIAL/PLATING	BRASS/NICKEL
RATED CURRENT [A]	4.0 A
RATED VOLTAGE [V]	250 V
OUTER JACKET MATERIAL/COLOR	PVC/VIOLET
CONDUCTOR INSULATION MATERIAL	POLYETHYLENE
NUMBER OF CONDUCTORS [AWG]	2x22 AWG, 22 AWG DRAIN
SHIELD	ALUM. MYLAR PLUS TINNED COPPER BRAIDED
TEMPERATURE RANGE	-30°C to +75°C (-22°F to +167°F)
PROTECTION CLASS	IP67
MAX. PANEL THICKNESS	3.0mm [0.12"]



CABLE LENGTH	TOLERANCE *
ALL LENGTHS	+ 4% (OR 50mm) OF LENGTH - 0% (OR 0mm) OF LENGTH WHICHEVER IS GREATER
STRIP LENGTH	TOLERANCE *
0-7mm	±0.5mm
8-29mm	±1.0mm
30-49mm	±2.0mm
50-69mm	±3.0mm
70-100mm	±4.0mm
OVER 100mm	±5.0mm
* UNLESS OTHERWISE SPECIFIED	

## NOTES:

1. "\*" INDICATES CABLE LENGTH IN METERS. CONTACT TURCK TO ORDER SPECIFIC LENGTHS.

## SOURCE DRAWING - FOR REFERENCE ONLY

RELATED DOCUMENTS		3RD ANGLE PROJECTION		<div>THIS DRAWING IS CONFIDENTIAL AND THE PROPERTY OF TURCK INC. USE OF THIS DOCUMENT WITHOUT WRITTEN PERMISSION IS PROHIBITED.</div> <div><b>TURCK inc</b> <i>High Technology Sensors and Automation Controls</i></div> <div>3000 CAMPUS DRIVE MINNEAPOLIS, MN 55441 1-800-544-7769 (763) 553-7300 (763) 553-0708 fax turck.com</div>			
1. 2. 3. 4.							
MATERIAL		DRFT RDS		DATE 04/21/04		DESCRIPTION  FSSDWE 455-*M	
		APVD		SCALE 1=1.0			
FINISH		UNIT OF MEASUREMENT  MILLIMETER [ INCH ]		IDENTIFICATION NO.		REV	
						G	
		DO NOT SCALE THIS DRAWING		FILE: 777006415		SHEET 1 OF 1	

G	UPDATE END VIEW TO SHOW SHIELD TIED TO COUP. NUT	RDS	09/16/14	47231
REV	DESCRIPTION	BY	DATE	ECO NO.